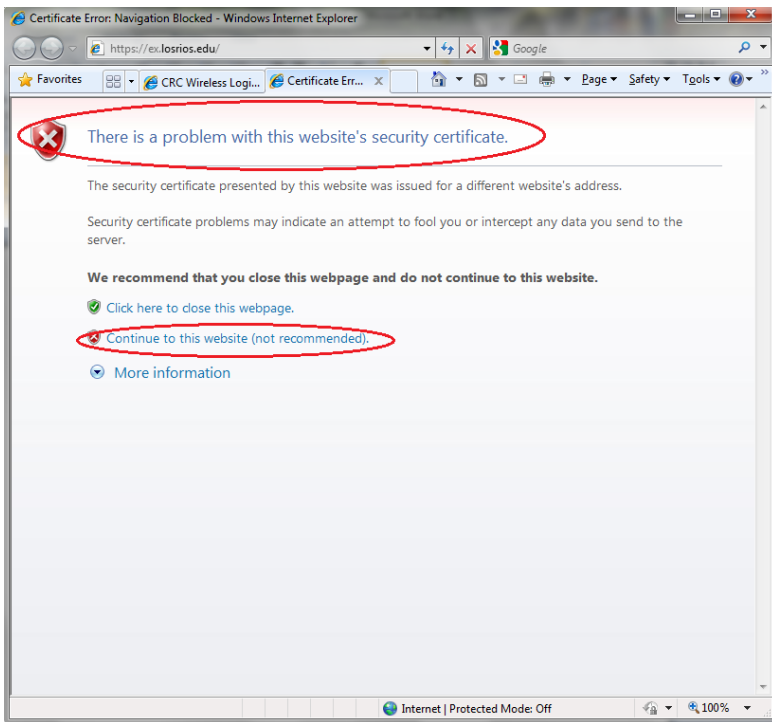
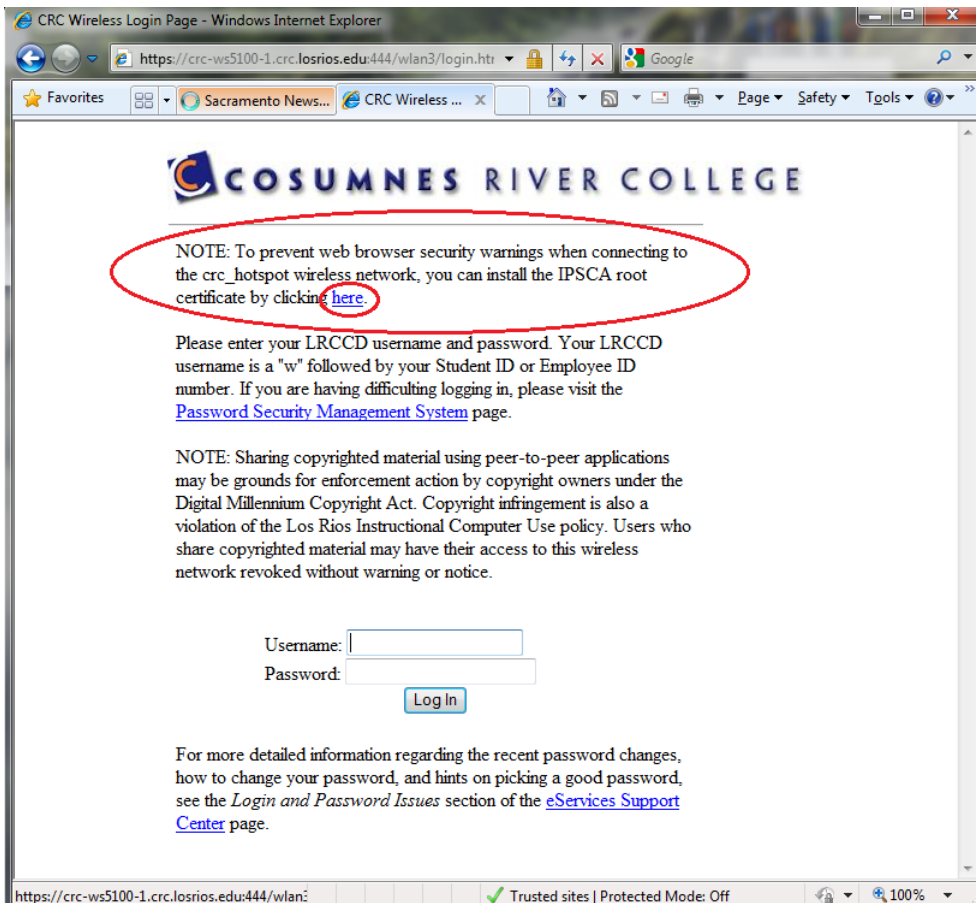


## Instructions for Installing Web Site Certificates

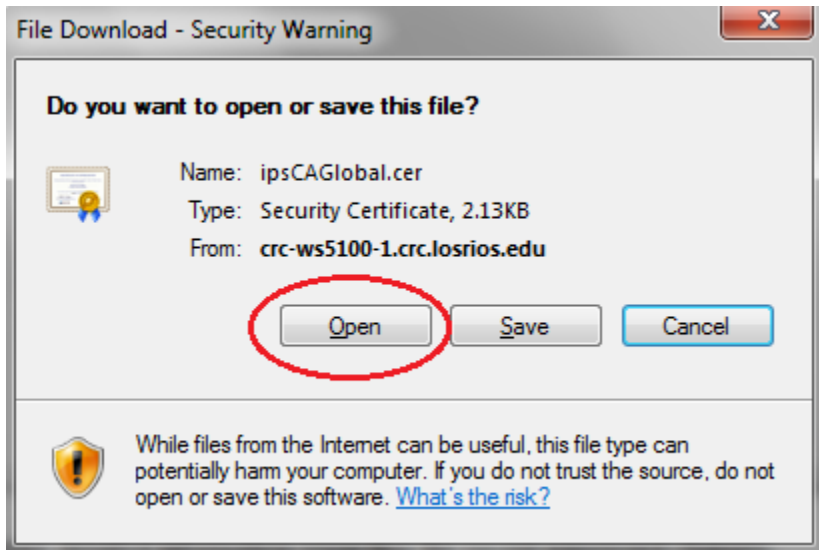
If you receive web site certificate errors when connecting to the CRC\_Hotspot, Click the “Continue to this website (not recommended).”



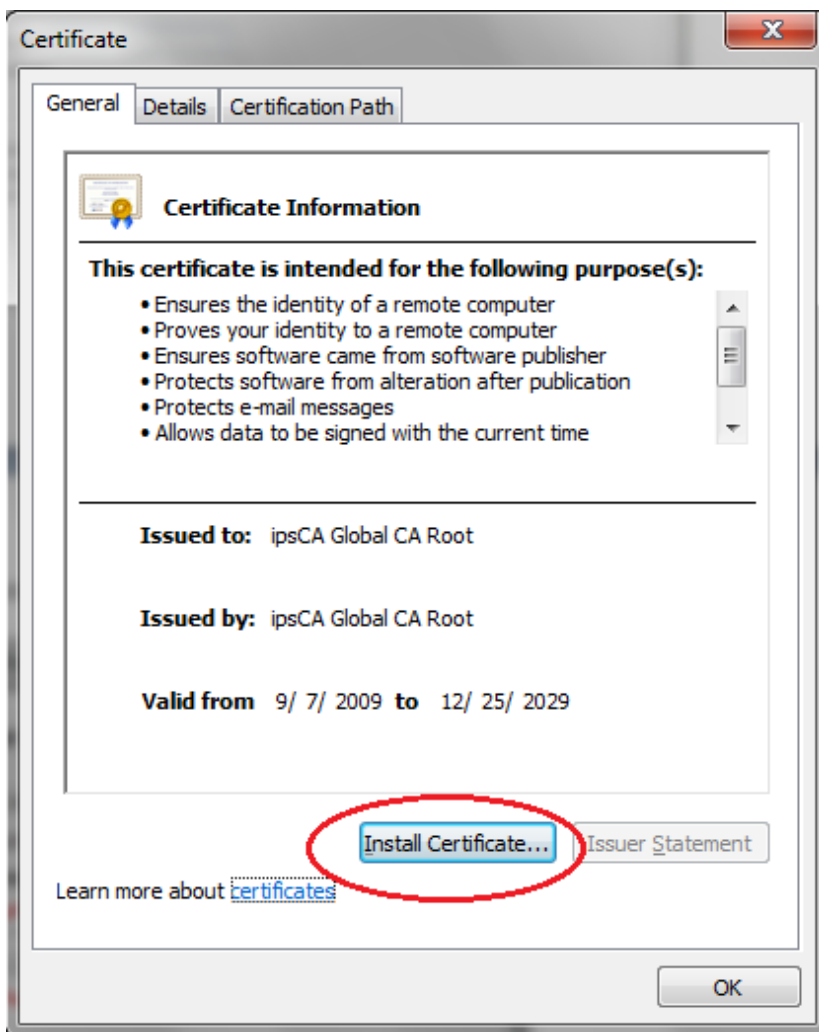
Once you continue you will see the following web page, and to prevent future certificate errors with browsers other than IE please note the “NOTE:” and click the “[here](#)” link.



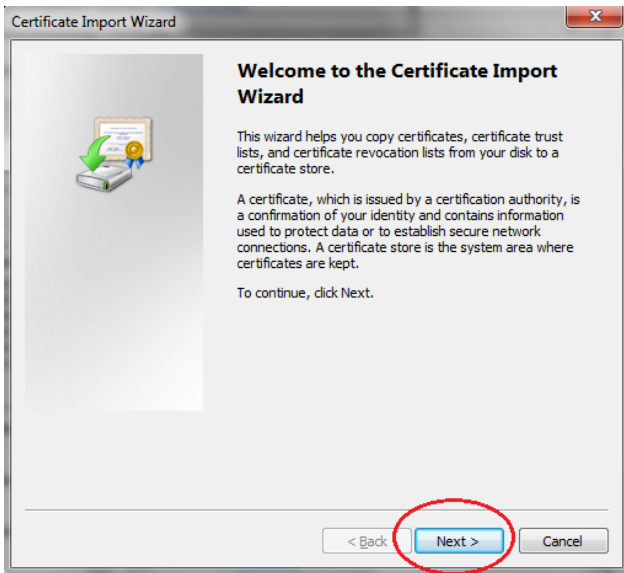
To install the certificate on your computer, click the **Open** button:



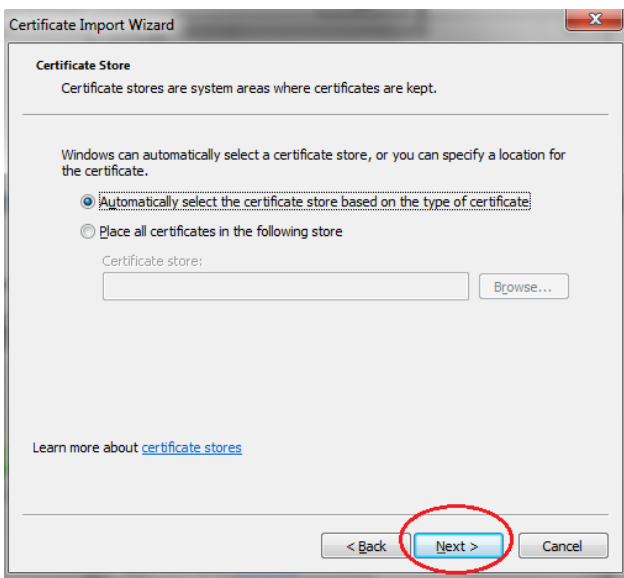
Click the **Install Certificate...** button.



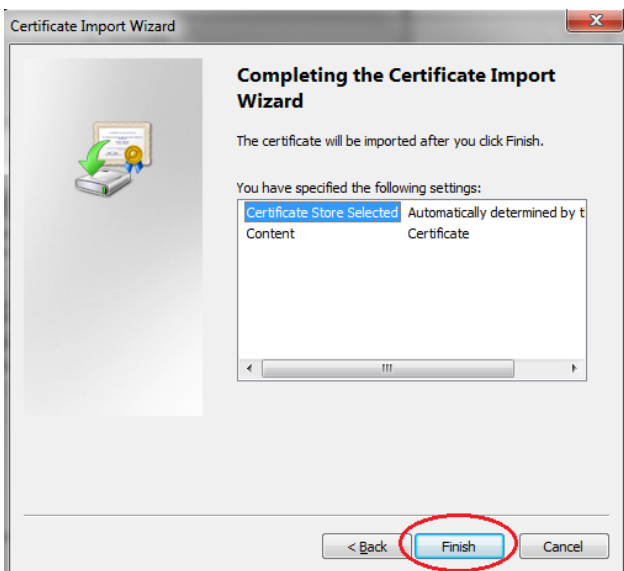
Click the **Next** button:



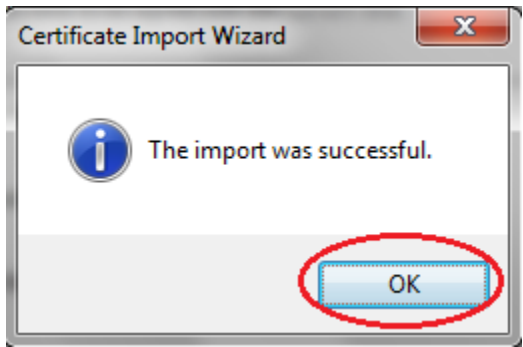
Leave the default settings and click the **Next** button:



Click the **Finish** button:



Click the **Finish** button on the import confirmation:



The certificate is now installed and should prevent future certificate errors with browsers other than IE.